

Location

Lanson Place Kondominium No. 8 is conveniently located at Jalan Ampang Hilir, next to Kuala Lumpur's "Golden Triangle" the City's commercial hub, the KLCC and the prime residential and embassy district of Kuala Lumpur.

Residence Facilities

- Choice of fully or partly furnished apartments
- Refrigerator, Oven and Cookers in Kitchen
- Complete sets of Light Fittings and Curtains
- Optional Wireless Broadband Internet Connection
- Utility Yard with Living Quarter
- Washing Machine & Dryer

Guest Services Available

- 24-Hour Security with closed-circuit monitoring
- Laundry and Dry Cleaning Service
- Orientation Tour of Ampang Hilir
- On-site Management Office

As an added privilege, residents can take advantage of the facilities at Lanson Place Ambassador Row Serviced Residences, right next door.

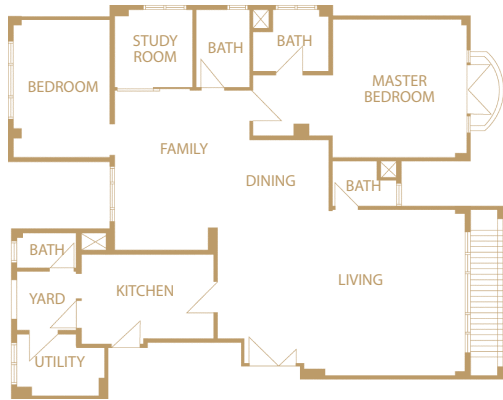
Other On-Site Facilities

- Fully Equipped Gymnasium with Sauna
- Two Swimming Pools & Whirlpool
- Lush Landscaped Gardens
- Children's Playground
- Tennis Court
- BBQ Station
- Covered Car Park

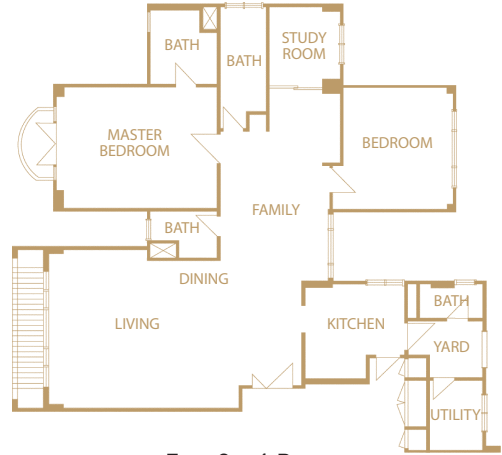
Nearby Amenities

- International Supermarkets
- Montessori Kindergarten
- Private and International Schools
- Gleneagles Private Hospital
- Royal Selangor Golf and Country Club
- Polo & Riding Club
- Local & International Restaurants
- Embassies





Type 2 + 1 Rooms
(1600 sq.ft.)



Type 2 + 1 Rooms
(1600 sq.ft.)

Type of Residences

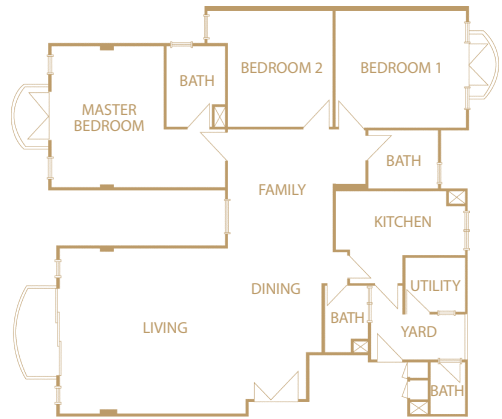
There are 132 apartments at Kondominium No. 8 Ampang Hilir varying in specifications to suit the needs of singles or families.

72 Units of Two Bedrooms Apartments - 1500 – 1875 sq.ft.

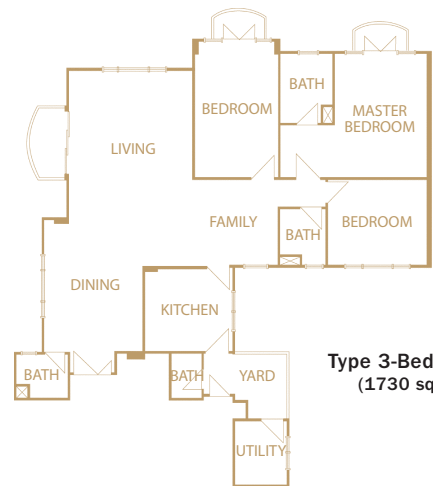
36 Units of Three Bedrooms Apartments - 1800 – 2200 sq.ft.

12 Units of Two Bedrooms Penthouses - 2600 – 3000 sq.ft.

12 Units of Three Bedrooms Penthouses - 3100 sq.ft.



Type 3 + 1 Rooms
(1800 sq.ft.)



Type 3-Bedrooms
(1730 sq.ft.)

Lanson Place Kondominium No. 8, Kuala Lumpur

6, Jalan Ampang Hilir, 55000 Kuala Lumpur, Malaysia
Tel: 60(3) 4252 6250 Fax: 60(3) 4252 7398

Email: enquiry.lpk8@lansonplace.com
www.lansonplace.com

Owned by  WINGTAI ASIA