

Location

Secretly tucked away in the heart of Shanghai, beside Shanghai's institution, Xintiandi, lies Lanson Place Jinlin Tiandi Residences. Walk a few steps down the road and find yourself on Huaihai Lu, a world of glittering shopping malls offering premium goods, restaurants and modern office blocks.

Type of Residences

Room number: 106

Layout: Three-bedroom including one en suite, balcony and full kitchen

Size: 180 and 220 sq.m.

Guest Services Available

- Concierge Service
- Laundry and Dry Cleaning Service
- Daily Newspaper Delivery
- Housekeeping Service
- 24-Hour Security and Closed-circuit Monitoring
- Food delivery service
- Limousine Service
- Limousine pick-up from Airport

Comprehensive Facilities

- Flat-screen Color TV
- Cable and Satellite Television
- Home Theatre System
- Broadband Internet Connections
- Voice Mail, Fax Point, IDD and DID Telephone Lines
- Full Kitchen with
 - Microwave
 - Refrigerator
 - Dish Washing Machine
 - Washer / Dryer
 - Chinaware, Glassware and Crockery
 - Comprehensive Cooking Utensils
- Hair Dryer
- Iron and Ironing Board
- Personal Safe
- Electronic Key Lock System
- 24-Hour Reception
- Air-Conditioning with individual control
- Covered Car Park

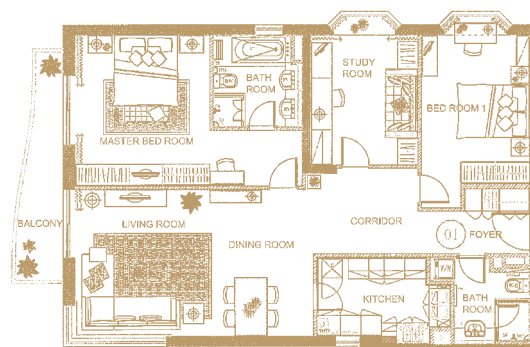


Clubhouse Facilities

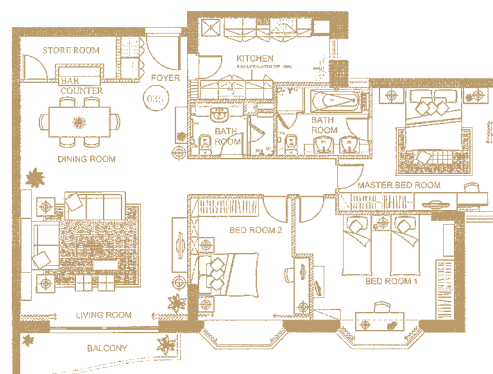
- Fully Equipped Gymnasium
- Indoor Swimming Pool
- Sauna and Steam Rooms
- Landscaped Garden
- Business Centre

Nearby Attractions

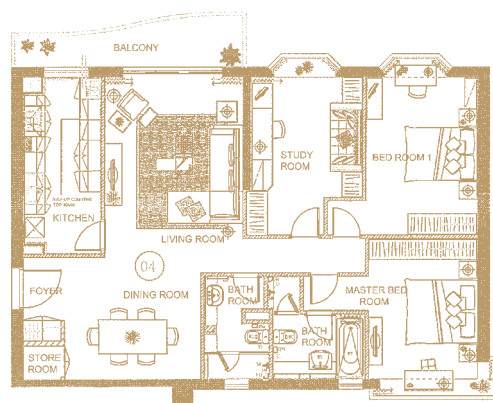
- Xintiandi Entertainment Hub – across the street
- Huaihai Zhong Lu Shopping District – 2 minutes walk
- Nanjing Dong Lu Shopping District – 3 minutes by car
- People Square (Shanghai Museum, Shanghai Art Museum, Shanghai Grand Theatre) – 3 minutes by subway
- Dr. Sun Yat Sen's former residences – 5 minutes walk
- Tong Ren Lu a collection of bars – 5 minutes by car
- Nanjing Xi Lu Shopping District – 5 minutes by car
- Zhou Enlai's former residences – 7 minutes walk
- The Bund – 10 minutes by car
- Heng Shan Lu International Church – 15 minutes by car
- City Supermarkets



Apartment 01



Apartment 03



Apartment 04



Lanson Place Jinlin Tiandi Residences, Shanghai

No. 3, Lane 168 Xingye Road, Luwan District,
Shanghai 200020, China

Tel: 86 (21) 2306 1888 Fax: 86 (21) 2306 1999

www.lansonplace.com